

# Lourdes Hospital Foundation

## Fall 2020 news

*Sustaining the Vision  
Supporting the Mission*



8.26.20

Dearest Lourdes Hospital  
Foundation members ~

Words cannot express my  
gratitude for your support of  
the financial burden living  
with Stage 4 metastatic cancer  
can bring. Having very costly  
tests to monitor your disease  
progress is necessary and important.  
Unfortunately, insurance companies do  
not feel the same. I am so thankful  
to the foundation for covering my  
out of pocket expense for such a test.

I am hopeful that Lourdes will  
continue to support Stage 4 patients  
in realistic ways, considering the  
needs of body, mind & spirit while  
serving as a Regional Cancer Center.

Thank you again from the bottom  
of my heart for your support and  
honoring the spirit of your founder.  
With great appreciation -  
Andrea

### You make the difference.

From the message on the left, giving thanks for financial assistance to cover expensive medical testing, to the hand colored, black velvet coloring book cut out below thanking us for a partial payment of moving expenses; notes pour in.

It is because of you, the donor, that everything, from assisting individuals in financial difficulty due to illness, to purchasing major pieces of medical equipment, to paying for necessary renovations, to funding community outreach programs is made possible.

We pass these messages of gratitude and love on to those who have earned it.

### The thanks go to you.





# Breast care

## Hologic Selenia Mammography Machines

### Lourdes Raises \$620,000 in support of its Mammography Replacement Project!!

Receiving a diagnosis of cancer, specifically breast cancer, can be a frightening time in anyone's life, however, it is not hopeless. At Lourdes we are on the forefront in the fight against cancer and its early detection and treatment.

A key component in this initiative is detection of the illness.

The Hologic Selenia Mammography Units are vital to this process of early detection.

The replacement of the current 2-Dimensional units with the new 3-Dimensional units will greatly assist in this process. The new machines will have extensive capabilities, offering very sharp imagery with improved visibility of the fine details for greater diagnostic confidence.

- ◆ Groundbreaking 3-Dimensional capabilities.
- ◆ Earlier detection of breast cancers—regardless of age or breast density.
- ◆ Clearer lesion images—detecting 20%-65% more invasive breast cancers.



We are so grateful to three of our local foundations for their support and commitment to this project.

- ◆ Many thanks to the Decker Foundation for its gift of \$395,000!
- ◆ Many thanks to the Mee Foundation for its gift of \$150,000!
- ◆ Many thanks to the Hoyt Foundation for its gift of \$75,000!

Their support of this project has made this endeavor become a reality that will greatly impact countless individuals going forward.

### A few words from Michelle L. Weber, Manager of Radiology at the Breast Care Center:

The Lourdes Breast Care Center and Millenium Medical Imaging are so thankful for the Lourdes Foundation donation that has allowed us to upgrade our hospital mammography unit. Upgrading this unit to allow 3D tomographic imaging, provides the radiologists with the ability to view multiple cross-sectional images of the breast. These images are then compiled into one image that offers a detailed look inside the breast. The advancement of this technology will help us provide high quality imaging.

*Yearly screening mammography is such an important step in early detection of breast cancer, when it is best treatable. As a mammographer, I personally know the importance of imaging. I have had screening mammography yearly since the age of 40. At the age of 49, I had a benign biopsy of my left breast. When I returned for my yearly mammogram 14 months later, I was told that I needed to return for additional imaging of the right breast. In March 2018, I was diagnosed with stage 2 breast cancer, which had not been present on my mammogram the prior year. I ended up having a lumpectomy as well as going through 4 months of chemotherapy and 20 radiation treatments. I will continue to take an anti-estrogen pill for a total of 5 years to help reduce the potential of recurrence of my breast cancer. M. L. Weber*



**This past year has had its challenges, to put it mildly.**

Nonetheless, the Foundation was able to raise \$1,399,454 in gifts from foundations, businesses, sponsors and countless generous individuals like you who so freely give so that we can provide support to the Lourdes Hospital's mission of compassionate care for all.

Since November of 2019, the total amount of revenue income is \$2,854,953.

**\$1,399,454 - fundraising**  
**+\$1,425,499 - investment earnings**  
**\$2,854,953 - grand total - fundraising + investment earnings**

Since 1981, the Lourdes Foundation has proudly supported Lourdes in caring for the sick and those in need. Through your generosity we have been able to set up an endowment which greatly assists us in our mission. As of 2020, the endowment is \$26,829,325.

These are some of the gifts that the foundation has received that will directly assist Lourdes Hospital in its mission of providing compassionate, loving healthcare in the holy tradition of St. Vincent De Paul and the Daughters of Charity.

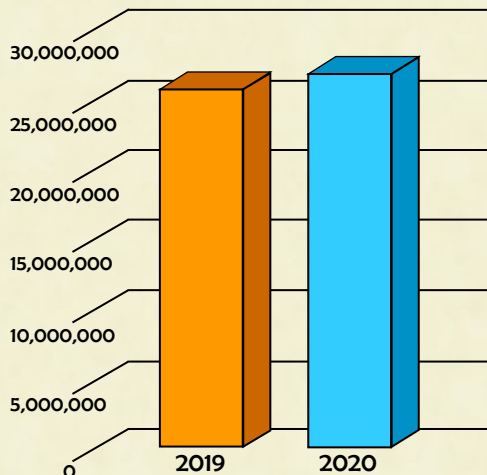
**BioFire COVID-19 testing machines**

\$125,000 from Decker

**3D Mammography Machines**

\$395,000 from Decker  
 \$150,000 from Mee  
 \$75,000 from Hoyt

**Year-to-Date  
 Net Asset Comparison**



**Last Year to Present**

The past year has seen a 5.4% increase in the net assets of the Foundation.

- Fiscal Year 2018 - 2019: \$25,368,610
- Fiscal Year 2019 - 2020: \$26,829,325

July Totals



## The Lourdes Hospital Foundation continues its mission of support to those in need!

The Lourdes Hospital Foundation receives requests from Our Lady of Lourdes Hospital and its many off-site and outreach programs for financial assistance. The Foundation does its best to provide those funds, through an ongoing process of investment strategies, gifts from other Foundations, grants, unsolicited donations and donations solicited through appeals and events.

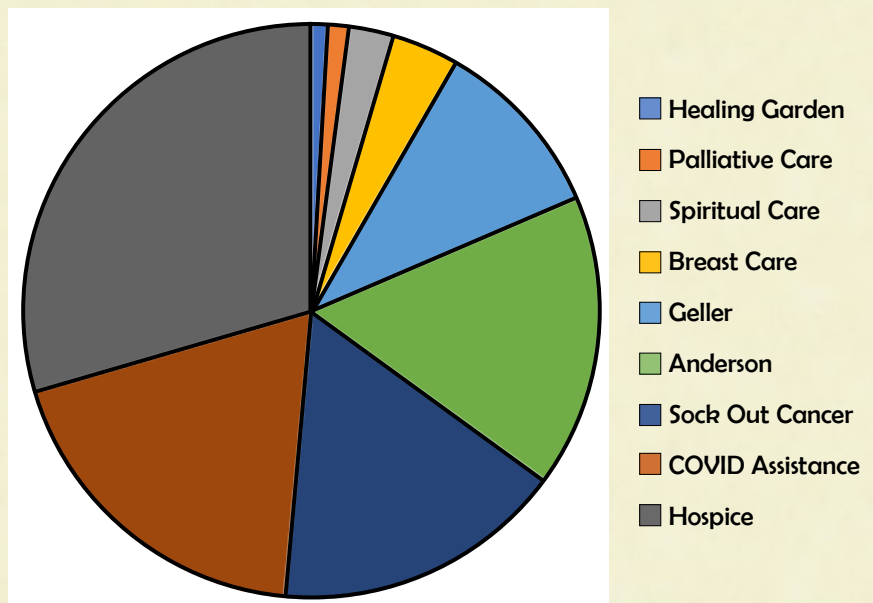
These funding requests take two basic forms:

- ◆ Funding large projects with a high dollar value. These tend to be funded through specific grant requests, as indicated on previous page relative to the BioFire and 3D mammography machine grants.
- ◆ Funding individuals in need. This financial support is taken out of specific funds supported by individual donations.

Year-to-Date  
Requests Funded for Individuals

Being in poor health is not cheap and when it comes to chronic illness and cancer, the basic expenses of living and the affordability of medication and medical bills can become a crushing load. The Foundation manages a large variety of funds set up to assist individuals and their families.

To the right is a chart that shows the relative portions of the nearly \$43,000 that have been disbursed in support of requests from individuals in need.



# New Board Members - Welcome!



to the Lourdes Hospital Foundation

## **Alfred Gorick —**

Alfred Gorick, a 1982 graduate of Windsor Central High School, went on to attend Clarkson University where, in 1986, he earned a Bachelor of Science degree in Civil & Environmental Engineering.

Upon completion of his studies at Clarkson, Mr. Gorick founded Alfred Gorick Construction Co., Inc., and has been president since 1988.

He has been a director of the National Demolition Association, designed and developed River Run II Golf Links, and has been named in the Who's Who of Outstanding Business Executives. He has also served on the Town of Kirkwood Zoning Board, The United Way of Broome County Board, and the Southern Tier Hockey Association Board of Directors.

He is currently the parish council president of St. John's Ukrainian Orthodox Church in Johnson City, NY.

**Welcome All!!!**

## **June Wootton —**

June Wootton, a former long-time board member of the Lourdes Hospital Foundation, has returned. In the past she served in different capacities, most notably as our secretary.

June is a Registered Nurse and she was head nurse of the first pediatric hemodialysis unit on the East Coast. She also worked for many years with dying children.

A passionate and staunch supporter of Lourdes Hospice, she has been a Hospice volunteer since 1980. In addition, she served as a member of the Hospice Advisory Board for 19 years, and as Chair for 4 years.

June has been married to Earle Wootton since 1975 and they reside in Montrose, PA.

**Welcome back June!!!**

## **Charles Ellis —**

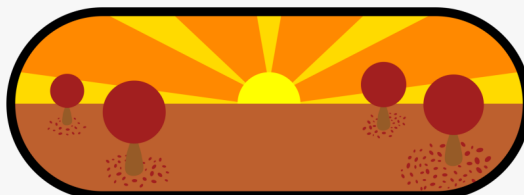
Charles "Chuck" Ellis, a life-long resident of the City of Binghamton, has returned to serve on the Lourdes Hospital Foundation Board. Chuck served many years before stepping down from the board several years ago.

Chuck is from an illustrious family who first settled in Binghamton in 1895. In the early part of the 20<sup>th</sup> Century, his grandfather opened a shop specializing in oriental carpets, which soon expanded into furniture, in the First Ward. The rest is history.

In the 1920's, the business moved downtown where it continues to be the premiere furniture emporium in the greater Binghamton area. Recently, Ellis Brothers, Inc. moved to their current location at the corner of Court Street and Water Street.

Chuck is a well-known and respected figure in the business world and we are so glad he is back on our board.

**Welcome back Chuck!!!**



# Lourdes Foundation

## Board Members

### Officers

John Mirabito, Chairman  
Armond George, Vice-Chairman  
Chad Nixon, Treasurer  
Michael J. Dobransky, Secretary

Fr. Anthony Amato	Jodi Miller
Kathy Connerton	Kim A. Myers
Kenneth Elliott	James Orband
Charles Ellis	Sanjiv Patel, MD
Alfred Gorick	Andrew Sacco, OD FAAO
Diran Kradjian	Shirley S. Tamulis
Mark Lane	James Terzian, MD
William H. Lane	Jane Wootton
James Matthews	

### Foundation Staff

Robert O'Connell, President  
Jennifer Corby, Administrative Assistant  
Keating Wilson, Data Base Specialist

### Contact Us

M-F 8:00am—4:30pm  
Phone: 607-798-5684  
[www.lourdes.com/about-us/foundation](http://www.lourdes.com/about-us/foundation)



**The holiday season is approaching.**

**A season of gift giving.**

If you order items from Amazon you can increase the gifts you give by ordering through Amazon Smile.

By specifying "Lourdes Hospital Foundation" as your charity of choice Amazon will donate .05% of the cost of your gifts to the Foundation.

*This can be done any time for any purchase through Amazon.*

 If you shop at Amazon on line: go on line at Amazon Smile

- Top ribbon left will have a charity name and a down arrow
- Click the down arrow and select "change" next to the charity name.
- In the "pick your own organization" box, type in "Lourdes Hospital Foundation"
- Various options appear, click select button next to "Lourdes Hospital Foundation – Binghamton, NY" ———then go shopping

.05% of your purchase price will be donated to the Foundation

**Many thanks to you for your support!  
You enable us to continue in our mission.**

 If you shop at Amazon on line: go on line at Amazon Smile

- Top ribbon left will have a charity name and a down arrow
- Click the down arrow and select "change" next to the charity name.
- Pick your own organization box, type in "Lourdes Hospital Foundation"
- Various options appear, click select button next to Lourdes Hospital Foundation – Binghamton, NY ———then go shopping

.05% of your purchase price will be donated to the Foundation

## Mail in a Donation

Write a check to :

Lourdes Hospital Foundation

And mail to:

Lourdes Hospital Foundation  
169 Riverside Drive, Suite 103  
Binghamton, NY 13905

## Donate on Line

Type "Lourdes Foundation" into your search bar online.

Click the Donate button and it will take you to credit card donation page.

This page allows you to:

- Make a donation in honor/memory of
- Select the fund you wish to donate to
- Enter a recurring payment

## Planned Giving

One of the easiest ways to make a planned gift is through a bequest. Through a simple provision in your will, you may make a bequest to the Foundation. This is an excellent choice if you want to maintain control of your assets during your lifetime, and support Lourdes in the future. We can work with you and your financial advisor to craft specific bequest language that accurately reflects your gift intentions.

Our Heritage Society gratefully acknowledges the following individuals who have demonstrated their devotion to Lourdes Hospital through a planned gift.

If you would like more information on Planned Giving or The Heritage Society,

Estate of Albert M. Anderegg\*

Estate of Robert L. McDevitt\*, K.S.G, K.C.H.S &

Catherine H. McDevitt\*, L.C.H.S.

Sara E. O'Connell\* Trust

*\*Deceased*

Estate of Paul F. Reich, MD\*

Estate of Hans F. Weil\*

Estate of Helena E. Weil\*

Mr. & Mrs. Earle Wootton

J. Paul Wynne Charitable Trust

please feel free to contact the Foundation office at 607-798-5684.



**Ways  
To Give**